

Scope of the LCCC-ACCESS Workshop on Model-Based Systems Engineering and Model-Based Engineering

John S. Baras

Lockheed Martin Chair in Systems Engineering

Institute for Systems Research

University of Maryland College Park

and

Tage Erlander Guest Professor, ACCESS Center, KTH,

and

TUM-IAS Hans Fischer Senior Fellow

May 4, 2015

LCCC-ACCESS Workshop

Lund, Sweden

BOEING 787: CLEANER, QUIETER, MORE EFFICIENT

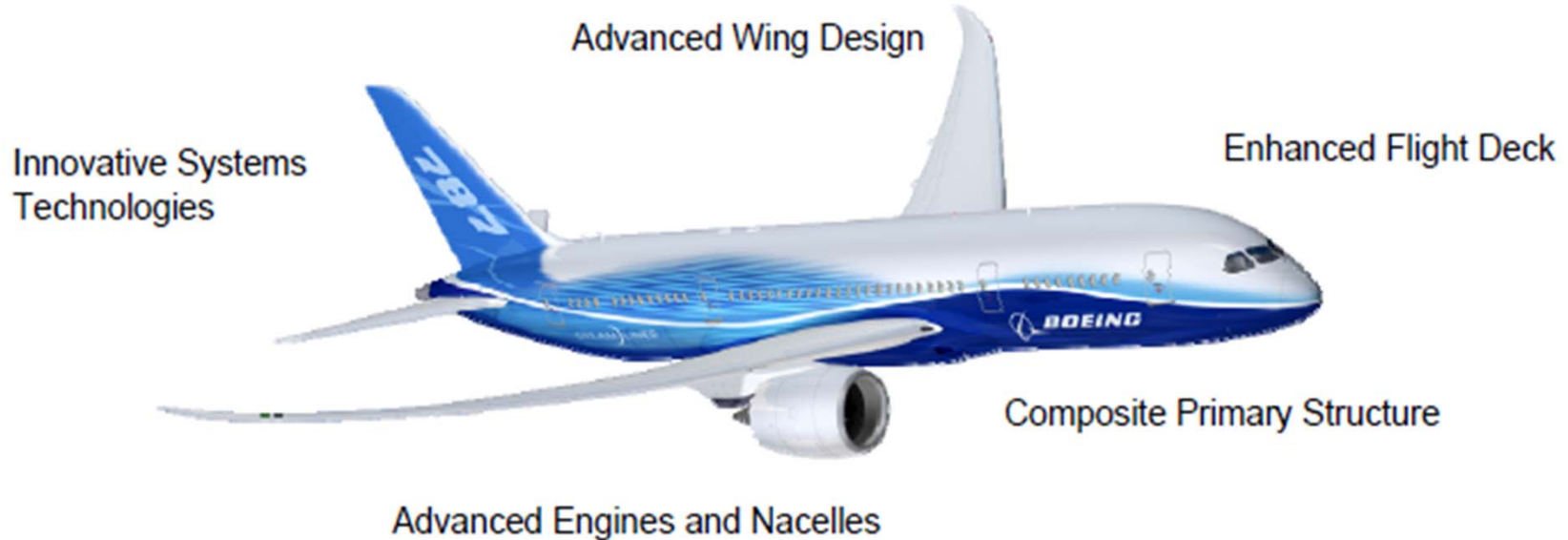
The 787 Dreamliner delivers:

20%* reduction in fuel and CO₂

28% below 2008 industry limits for NO_x

60%* smaller noise foot print

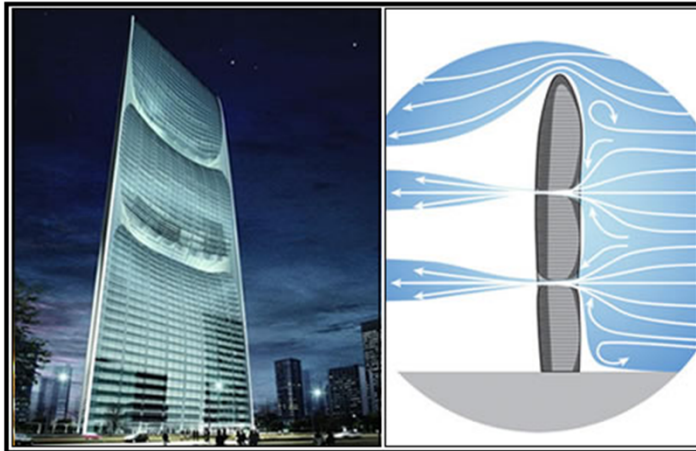
*Relative to the 767



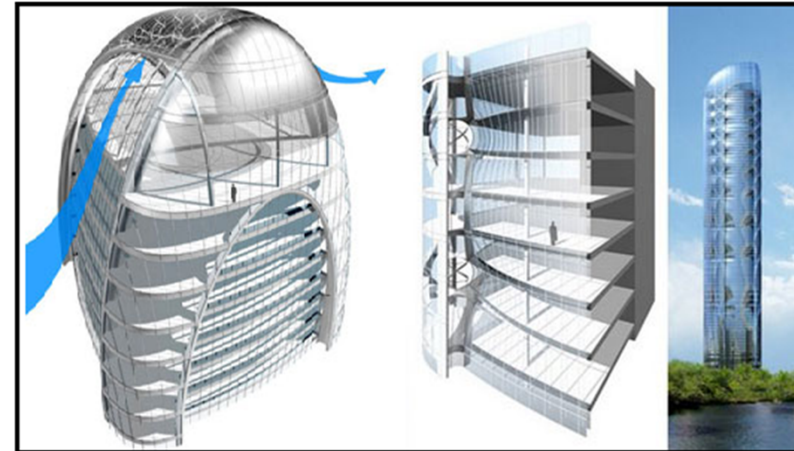
Buildings as Cyber-Physical Systems

- **Research focus:** Platform-Based Design for Building-Integrated Energy Systems.

Pearl River Tower Complex



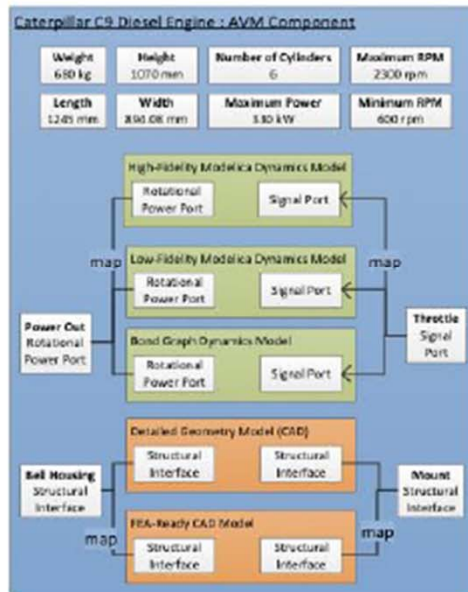
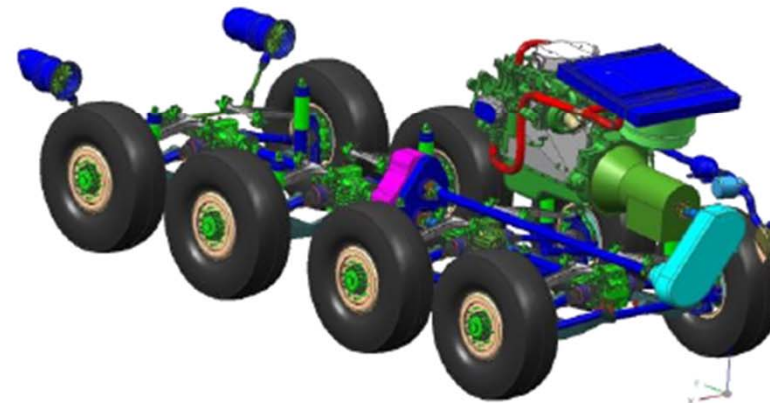
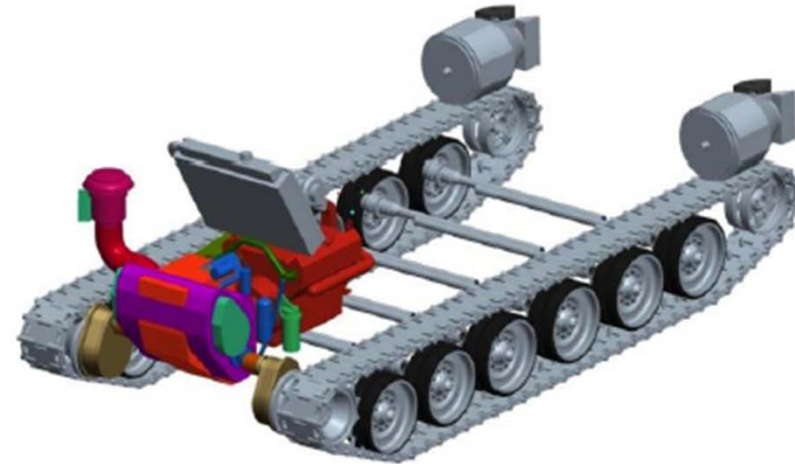
Green Technology Tower — Architectural Proposal for Chicago



META – iFAB – AVM: Component Models

As of today:

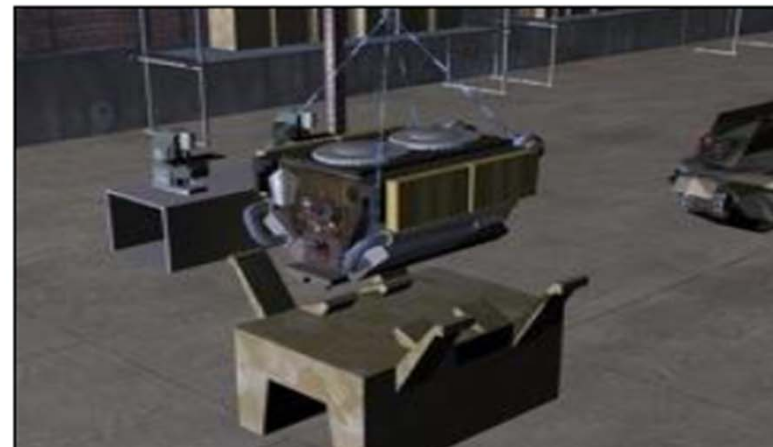
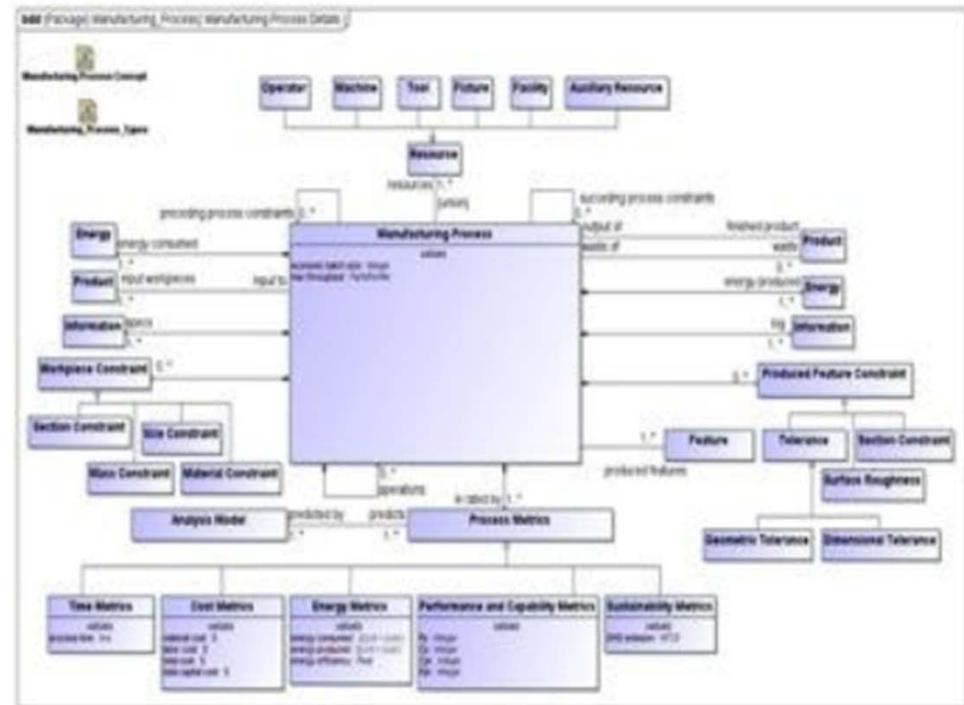
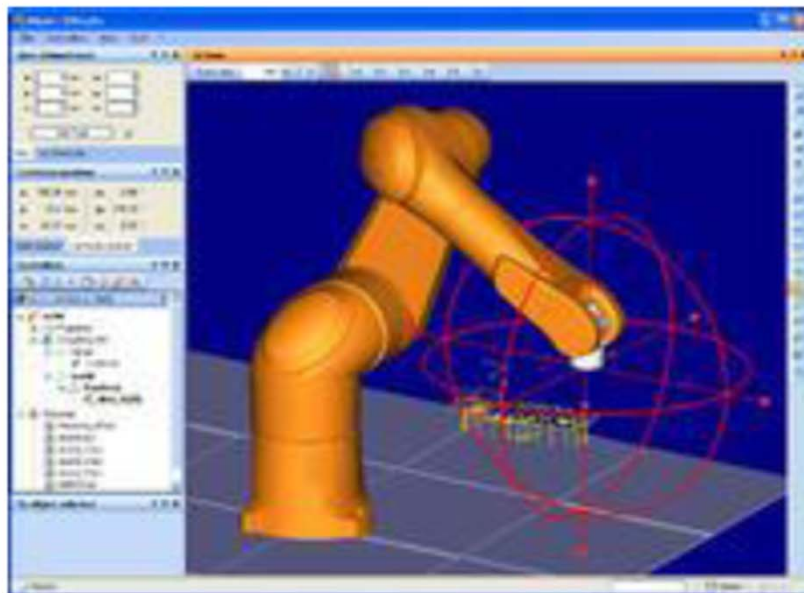
- 131 component classes
- 469 component instances
- 43 parametric components
- 112 ITAR protected models
- 357 non-ITAR protected models



META – iFAB – AVM: Manufacturing Process Models Semantics Across Domains

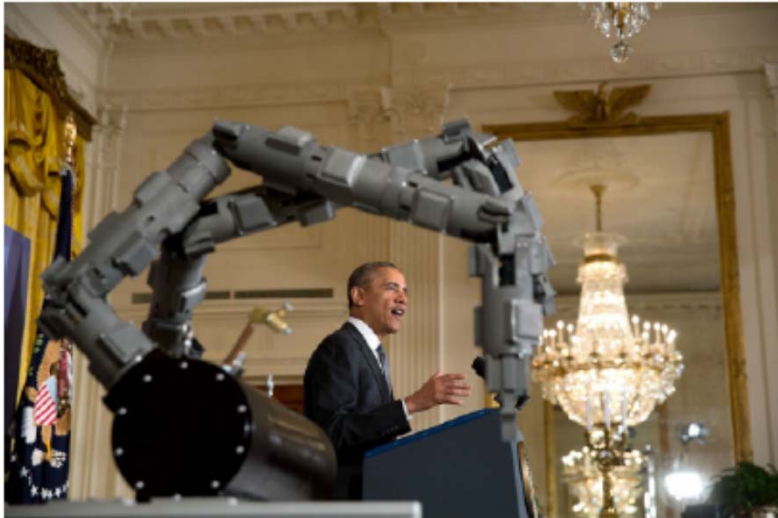
As of today:

- 7 material shaping processes
- 19 general processes
- 231 machine instantiations
- 64 manual labor units
- 3,212 tools



Digital Manufacturing and Design Innovation

- DMDI Announced February 25, 2014, 2014 by President Obama



President Barack Obama delivers remarks announcing two new public-private Manufacturing Innovation Institutes, and launches the first of four new Manufacturing Innovation Institute Competitions, in the East Room of the White House, Feb. 25, 2014. (Official White House Photo by Lawrence Jackson)

- Headquartered in Chicago
 - Academic-Industry-Government “Mega Project”
\$320M co-funding, 5 years
 - **Goal:** Revitalize manufacturing – “Society of Makers”
- “Infinite number of virtual factories and an open-source manufacturing platform”
 - Germany – Industrie 4.0
 - Industrial Internet

- **Google's Project ARA**: Smartphones are composed of modules (of the owner's choice) assembled into metal frames



- **Ubuntu Edge Project**: crowdsourcing the most radical smartphone yet “Why not look for the best upcoming tech and throw it together to stay ahead of the competition?”
- **Crowdsourcing** the development and manufacturing of **small unmanned aerial vehicles**

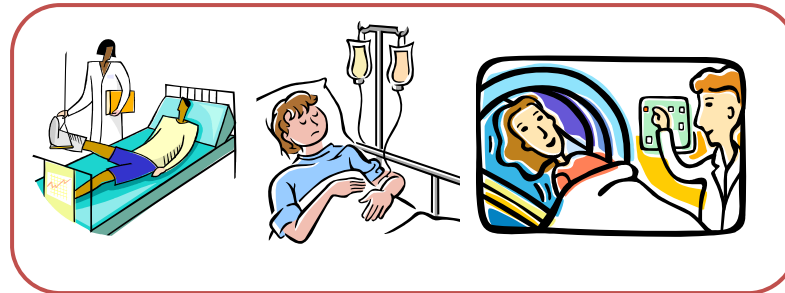
AUTONOMOUS SWARMS – NETWORKED CONTROL



- *Component-based Architectures*
- *Communication vs Performance Tradeoffs*
- *Distributed asynchronous*
- *Fundamental limits*



Model-Based Systems Engineering for Health-Care Management



Healthcare operations



Monitor performance,
generate ideas,
implement changes

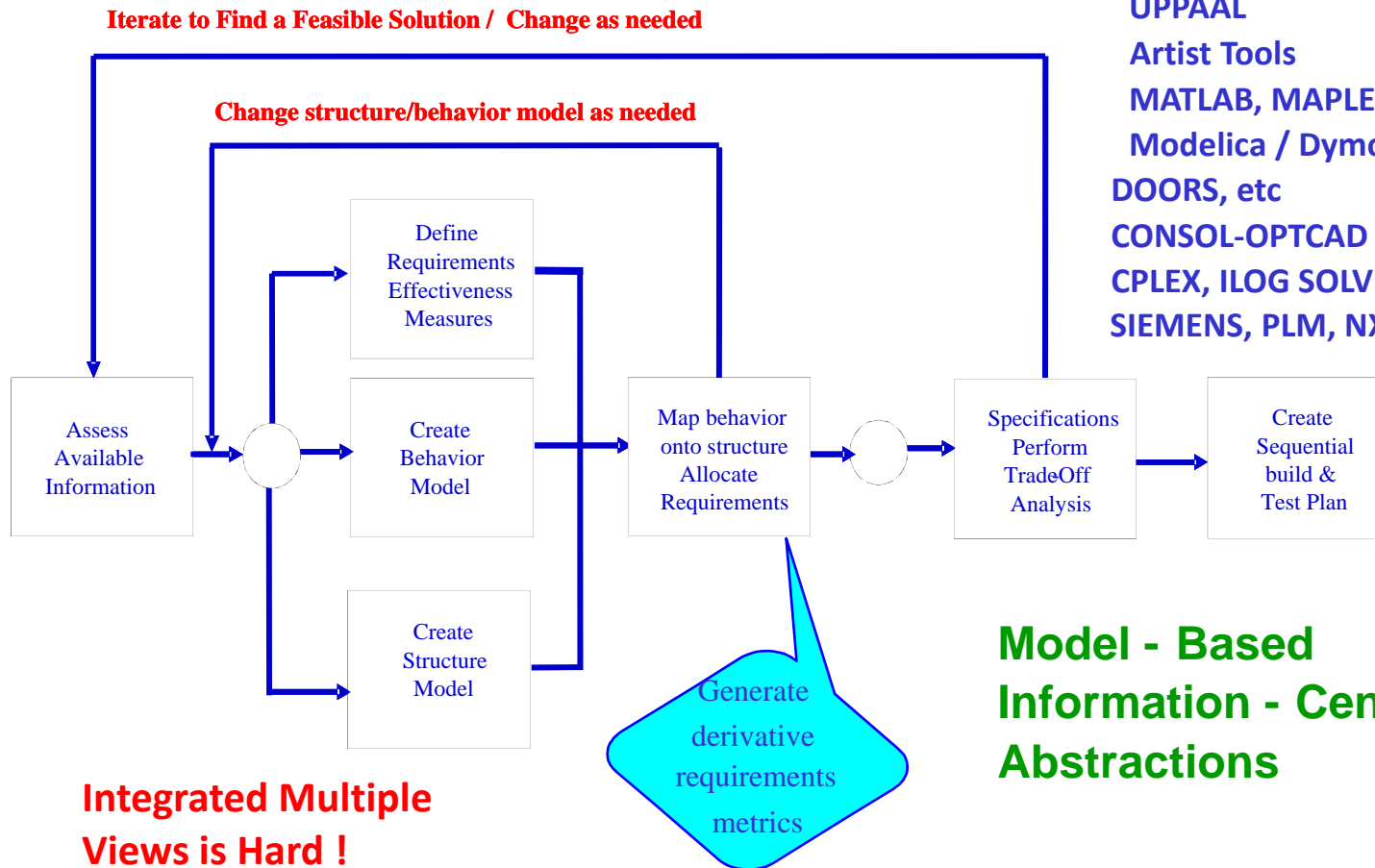


Build models,
analyze operations,
predict changes

COMPONENT- BASED MBSE

**Integrated System Synthesis Tools
& Environments missing**

Model- - based
UML - SysML - GME - eMFLON
Rapsody
UPPAAL
Artist Tools
MATLAB, MAPLE
Modelica / Dymola
DOORS, etc
CONSOL-OPTCAD
CPLEX, ILOG SOLVER,
SIEMENS, PLM, NX, TEAM CENTER



Integrated Multiple Views is Hard !

Model - Based Information - Centric Abstractions

- **Interact**
 - **Summarize where we are**
 - **Identify and summarize what we need**
 - **Describe key and fundamental challenges, approaches**
 - **Establish collaborations**
-
- ***Modeling heterogeneous CPS – Uncertainties***
 - ***Design Space Exploration and Tradeoffs***
 - ***Requirements Engineering --***
 - ***Testing Validation Verification***
 - ***From MBSE to MBE – remember Xerox CoLab and IPPD***
 - ***Make it affordable and “Easy”***

Thank you!

baras@umd.edu

301-405-6606

<http://www.isr.umd.edu/~baras>

Questions?